

ZOOMLION

# ZX23AE/ZX27AE SPIDER LIFTS

## HIGHLIGHTS

- ▶ 0.89m ultra-narrow width, quick-change work platform, easy access to compact spaces
- ▶ Pure lithium-ion battery power features environmental protection and quiet operation
- ▶ Accurate and efficient permanent magnet synchronous motor provides strong power and stable control
- ▶ Non-marking rubber track suitable for all terrains
- ▶ Central layout, great structural rigidity, and small boom deflection
- ▶ Bus hydraulic valve control system offers stable and reliable movement
- ▶ Advanced energy management system supports synchronous power supply from external power supply, providing long-lasting battery life

CE Certified

Electrification  
Sustainability

## FEATURES

### Standard Features

- ▶ Proportional control
- ▶ All motion alarm
- ▶ Flashing beacon
- ▶ Self-closing entry gate
- ▶ Emergency descent system
- ▶ Emergency stop button
- ▶ Auto-leveling system
- ▶ On-board diagnostic system
- ▶ Auto-leveling outrigger
- ▶ Non-marking rubber track
- ▶ Load sensing system
- ▶ Color display
- ▶ Horn
- ▶ Hour meter
- ▶ Use while charging
- ▶ Wireless remote
- ▶ Proportional handle steering
- ▶ 60A Lithium-ion Battery Smart Charger
- ▶ Battery level display
- ▶ Low battery protection

### Accessories & Options

- ▶ AC power to platform
- ▶ Air line to platform

ZOOMLION

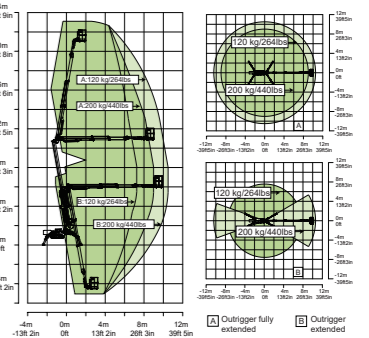
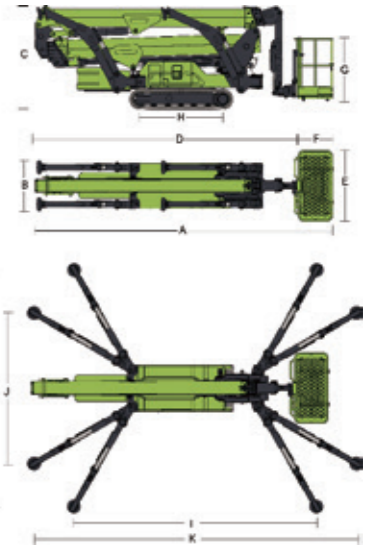
Model	ZX23AE		ZX27AE	
	Imperial	Metric	Imperial	Metric
<b>Size</b>				
Work Height	75ft 6in	23m	88ft 7in	27m
Platform Height	68ft 11in	21m	82ft	25m
Horizontal Outreach	34ft 5in	10.5m	49ft 7in	14.2m
Up and Over Height	35ft 8in	10.87m	40ft 10in	12.45m
Below Ground Reach	14ft 5in	4.4m	19ft	5.8m
A - Stowed Length (w/ platform)	17ft 10in	5.44m	20ft 2in	6.15m
D - Stowed Length (w/o platform)	16ft 4in	4.98m	18ft 8in	5.7m
B - Stowed Width	2ft 11in	0.89m	2ft 11in	0.89m
C - Stowed Height	6ft 6in	1.99m	6ft 9in	2.05m
E - Platform Length	4ft 7in	1.4m	4ft 7in	1.4m
F - Platform Width	2ft 4in	0.7m	2ft 4in	0.7m
G - Platform Height	4ft 1in	1.25m	4ft 1in	1.25m
H - Crawler Size (Length×Width)	3ft 9in×9in	1.124m×0.23m	4ft 11in×10in	1.52m×0.25m
I - Max Length w/ Outrigger Extending (Standard)	12ft 8in	3.85m	16ft 3in	4.95m
L - Max Width w/ Outrigger Extending (Standard)	12ft 8in	3.85m	14ft 8in	4.48m
K - Max Length w/ Outrigger Extending (Narrow)	16ft 5in	5m	21ft 2in	6.45m
J - Max Width w/ Outrigger Extending (Narrow)	8ft 6in	2.6m	9ft 5in	2.88m
Outrigger Pad Size (Diameter)	10ft	0.26m	10ft	0.26m
Approach Angle	25°		15°	
Departure Angle	27°		24°	

<b>Performance</b>				
Platform Capacity	440lb/265lb (restricted)	200kg/120kg (restricted)	510lb (restricted) 265lb (unrestricted)	230kg (restricted) 120kg (unrestricted)
Drive Speed	1.25mph	2km/h	1.25mph	2km/h
Gradeability	16.7°/30%		16.7°/30%	
Allowable Tilting Angle When Driving	10°/17%		10°/17%	
Turntable Swing	400° non-continuous		400° non-continuous	
Platform Rotation	±90°		±90°	
H-Tail Swing	0m		0m	
Max Leveling Angle	16°		16°	
Max Wind Speed	28 mph	12.5m/s	28 mph	12.5m/s

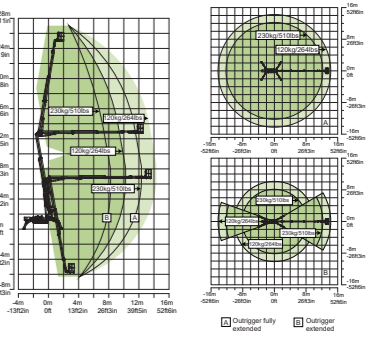
<b>Power</b>			
Battery	315Ah 48V	315Ah 48V	
Charger	48V/60A	48V/60A	
Drive Motor	Permanent magnet synchronous motor 48V	Permanent magnet synchronous motor 48V	
Lift Motor	Permanent magnet synchronous motor 48V	Permanent magnet synchronous motor 48V	
Auxiliary Power	Electric pump	Electric pump	
Hydraulic Tank Capacity	13.2 us gal	50L	
13.2 us gal	50L	13.2 us gal	50L

<b>Tire</b>		
Crawler type	Non-marking rubber track	Non-marking rubber track

<b>Weight</b>				
Gross weight	6614 lb	3000kg	10251 lb	4650kg
Ground Pressure When Driving	29.6 kN/m <sup>2</sup>		33.68kN/m <sup>2</sup>	
Ground Pressure When Working (Standard)	1.98 kN/m <sup>2</sup>		2.05kN/m <sup>2</sup>	
Ground Pressure When Working (Narrow)	2.26 kN/m <sup>2</sup>		2.45kN/m <sup>2</sup>	
Pressure on Single Outrigger When Working	13.8KN		31.89KN	



Range of Motion ZX23AE



Range of Motion ZX27AE

## ACCESS WITH ZOOMLION GREEN

Phone: 0086(731)-88353692  
E-mail: awp@zoomlion.com

Add: 701 Xulong Nan Lu, Xiangjiang New District, Changsha Hunan, China  
Web: www.zoomlion-access.com

ZOOMLION ACCESS reserves the right to make specification and/or equipment changes without prior notification. Product specifications are updated to June, 2024.