

# ZOOMLION

## EXTENDED-RANGE HYBRID TELESCOPIC BOOM LIFT

### ZT51JEH-V

Comply with CE Standard

#### HIGHLIGHTS

- ▶ Highest range-extended hybrid telescopic boom lift, work height reaches 50.6m, and outreach of 25m
- ▶ Common polygon boom features light weight, good stiffness, and strong torsion resistance
- ▶ Perfect combination of large-capacity lithium battery and long-life range extension system, switchable working mode of electricity or fuel, able to charge in work site
- ▶ High efficiency, long working hours, large power, full charge and full fuel for more than 7 work days
- ▶ Low voltage platform power system with more than 20 safety protections, safer and more reliable
- ▶ Low temperature feedback current control and power adaptive technology, eliminate the risk of battery thermal runaway, and extend the life of lithium battery by 10%
- ▶ No backward tilt limit, easy to operate
- ▶ Folded jib for compact transporting size and low transportation cost



#### FEATURES

##### Standard Features

Telecommunications System	Emergency descent system	4.3' Led display
Horn	Emergency stop button	Anemograph
Proportional control	Auto-leveling system	Anti-crushing device
All motion alarm	On-board diagnostic system	Remote monitoring and rental management platform
Flashing beacon	Tilt protection system	
Self-closing entry gate	Load sensing system	

##### Accessories & Options

- ▶ Platform work light
- ▶ Anti-collision device
- ▶ AC power to platform

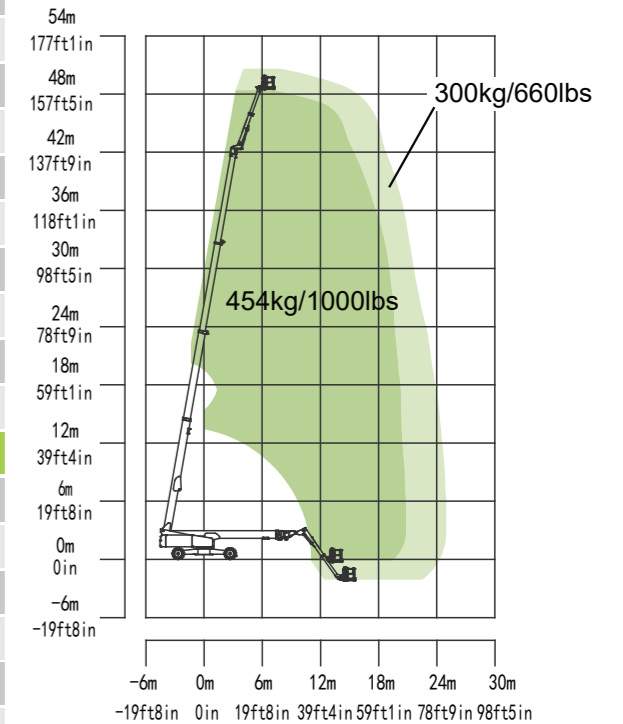
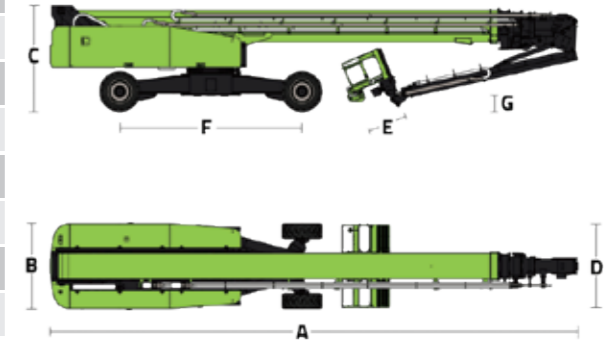
## ACCESS WITH ZOOMLION GREEN

Phone: 0086(731)-88353692  
E-mail: awp@zoomlion.com

Add: 701 Xulong Nan Lu, Xiangjiang New District, Changsha Hunan, China  
Web: www.zoomlion-access.com

## ZOOMLION

Model	ZT51JEH-V
<b>Size</b>	
Work Height	50.6m
Platform Height	48.6m
Horizontal Outreach	25m
A Overall Length (Stowed)	14.2m
B Overall Width (Stowed)	2.5m
C Overall Height (Stowed)	3.06m
D Platform Length	2.44m
E Platform Width	0.91m
F Wheelbase	5.36/4.69m
Track width	2.5/5.15m
G Ground Clearance	0.40m
<b>Performance</b>	
Platform Capacity	300/454kg
Drive Speed (stowed)	4.5km/h
Gradeability	45%(24°)
Turning Radius (Inside)	6.79/2.57m
Turning Radius (Outside)	8.43/6.39m
Turntable Rotation	360° continuous
Platform Rotation	±90°
Tail Swing	1.95m
Jib Rotation	125° (-55°~70°)
Max. Wind Speed	12.5m/s
<b>Power</b>	
Battery	80V/606Ah
Range Extender	18.2kW
Charger	80V/80A
Drive Motor	6.5kW
Lift Motor	30kW
Auxiliary power	12V DC
Fuel Tank	105L
Hydraulic Tank Capacity	300L
<b>Tire</b>	
Tire Type	Foam-filled tire
<b>Weight</b>	
Gross	26000kg



ZOOMLION ACCESS reserves the right to make specification and/or equipment changes without prior notification. Product specifications are updated to June, 2024.